

PROFESSIONAL **Garden Design** CONSULTATION SERVICES

· For Do-It-Yourself Projects ·



GASPER

OUTDOOR LIVING PERFECTED

August 2025



Professional Garden Design Help

Is available at Gasper for your next do-it-yourself landscape project

What's included: Up to 90-minute design consultation with one of our landscape designers for \$500. When you are finished you will leave with a professionally designed hand-sketched plan and a \$250 Gasper Gift Card.

Garden Design Consultation

To secure your reservation, contact us at 215-364-2400. and we will schedule your in-office consultation (up to 90 minutes) with one of the Gasper landscape designers. Design consultations are scheduled in office, Monday-Friday, during daytime office hours (9:00AM-4:30PM).

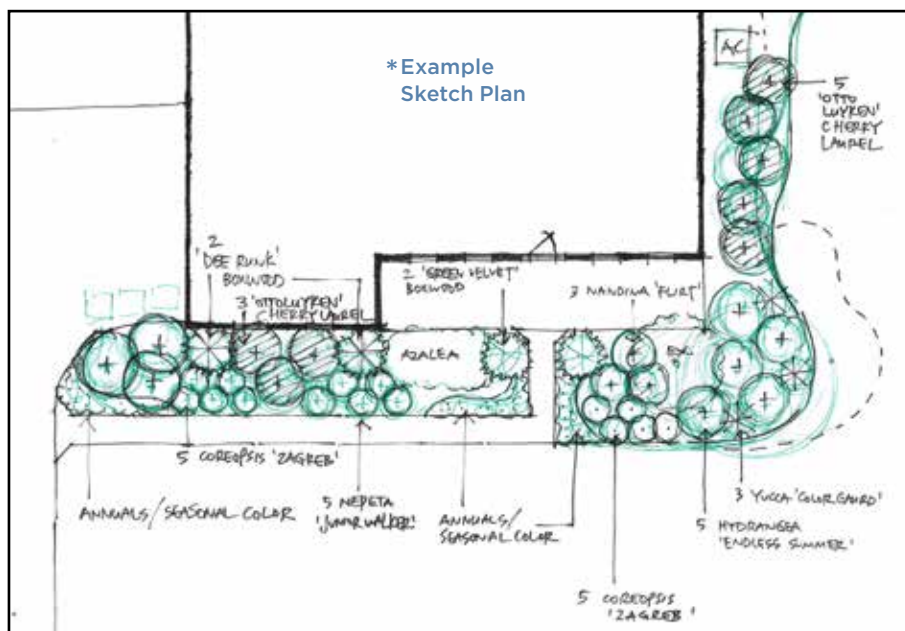
Getting Ready for your Design Consult

Please have ready the following information for your consult. The better prepared you come, the more value you will receive from your consultation.



**For the cost of \$500
you can have an up to
90-minute consultation with
a Gasper Landscape Designer.**

**You will leave with a
professionally designed
hand-sketched plan, and a
\$250 Gasper Gift Card!**





1. Photographs:

Photos of your project are REQUIRED!

Please shoot your project from a few different angles. Please take close-up photos of any existing plant material in the design area so that they are easy to identify.

Color prints are also acceptable. Email photos to your designer before consult.

Please do not rely on photos shown on your smartphone — they are too small for the designers to see the detail needed to give you the best recommendations.

2. Measurements:

Measurements are essential for an accurate design layout. Use the scaled graph paper on pages 4-5 to help measure your project area (one box = 1 foot × 1 foot). If you have a copy of your property's plot plan or a surveyed as-built plan, that would also be helpful to bring to the consultation.

These plans are often available upon request from your township planning or zoning office. For some tips on how to measure, see our measuring tips on page 7.

Measurements most helpful to the designers are:

- ▶ House footprint/foundation, including locations of windows and doors
- ▶ Property lines, setbacks and easements. (This information is usually found on an as-built property plans)
- ▶ Distances of and between elements as they relate to your project area
- ▶ Location and distances to existing large trees, planting beds, utilities, or anything else you feel impacts your project area
- ▶ More measurements are always better than too little or missing information

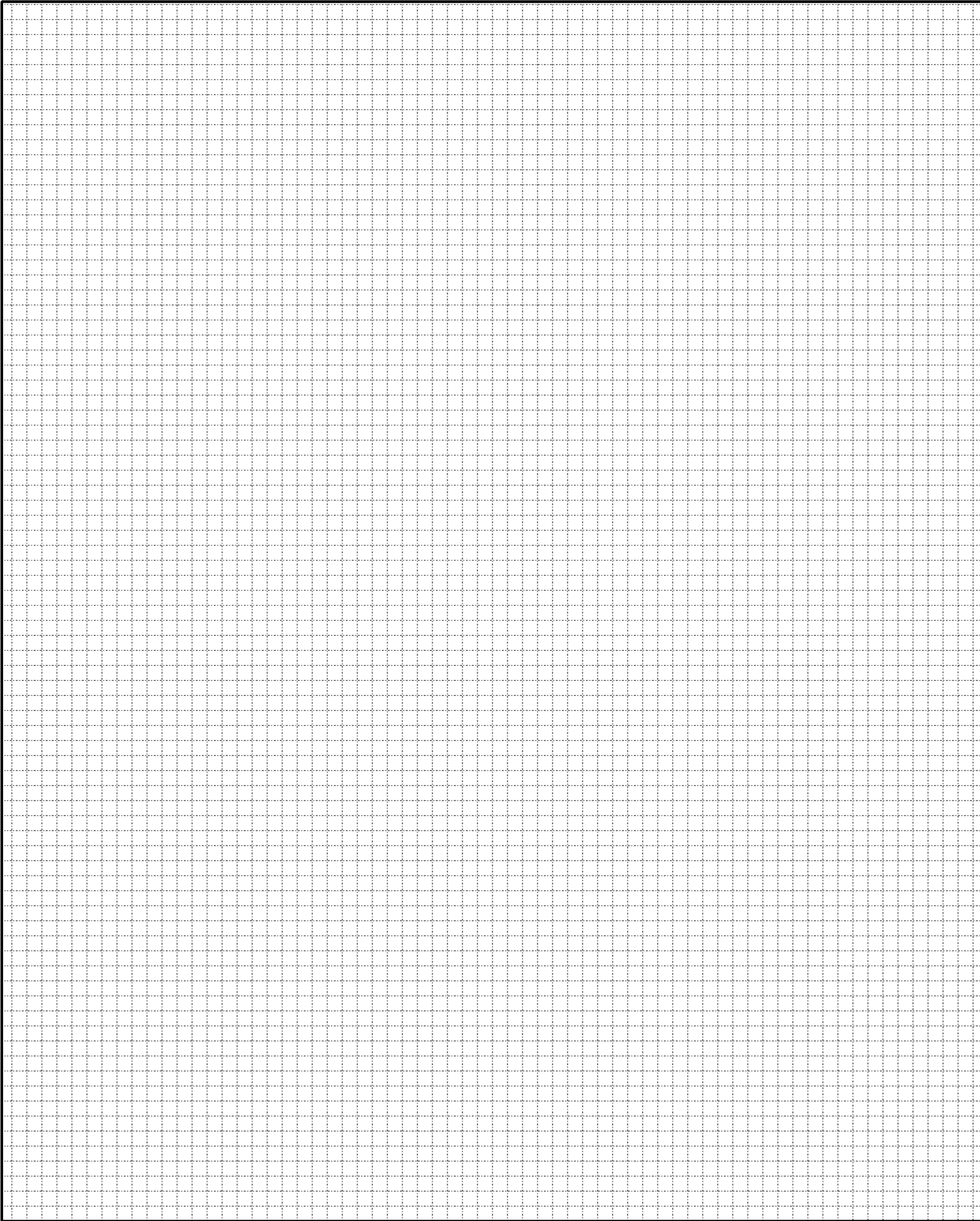
3. Before your consult please think about the following questions:

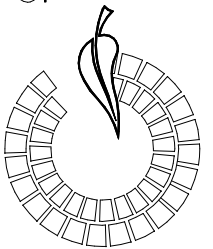
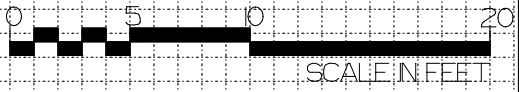
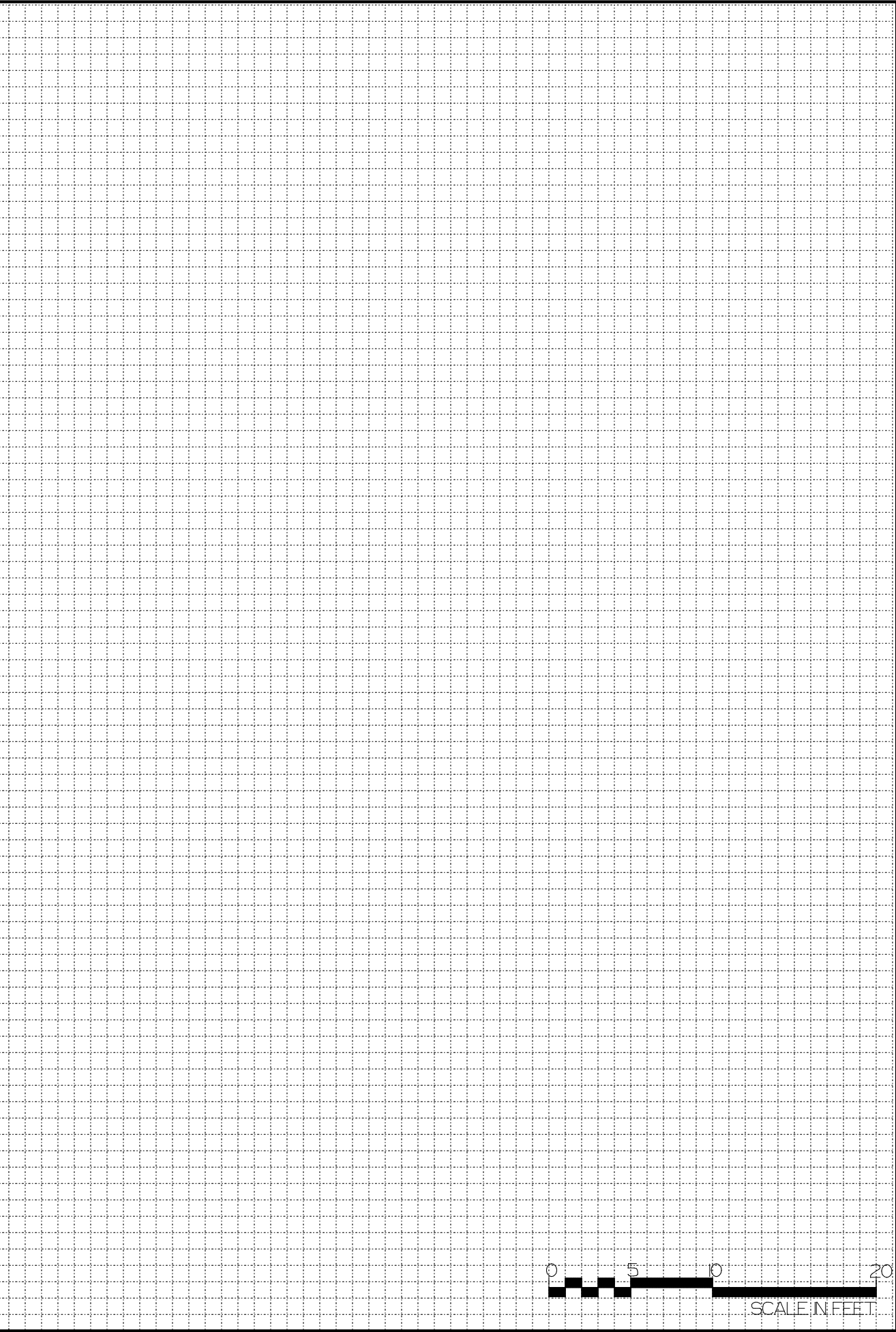
- ▶ How do you envision using the space?
- ▶ Any preferences you have such as favorite styles, plants or colors?
- ▶ Do you have deer that visit your yard?
- ▶ How much time do you have for maintenance?
- ▶ If time permits, your designer may also provide maintenance and care advice for your garden.

Service Limitations

This service does not include drafted plans/ drawings, complex hardscape projects, 3-D models, elevations, or projects requiring more than 90 minutes of consultation. Retail planting is an available option which can be discussed during your consultation.

This service is suited to small scaled DIY projects. If you have a larger project, or one that will require more than 90 minutes of consultation, we would recommend you either make multiple appointments (which will require additional purchase of \$500 consult/gift card) or contact our landscape division to see if the scope of your project may be better suited to our landscape and hardscape division.





Gasper Landscapes
316 TANYARD RD
RICHBORO, PA 18954
(215) 396-2880
WWW.GASPERNET

PROJECT ADDRESS:

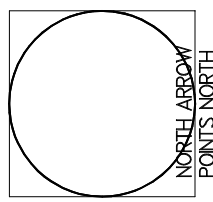
CLIENT NAME:

DWG. NAME:
DESIGN CONSULTATION

DRAWN BY:

SCALE:
1 SQUARE EQUALS
1 FOOT

DATE:



Project Notes

Meet With Our Professional Landscape Designer



Jeannie Sachs

Jeannie Sachs, is a highly skilled Landscape Consultant and Pennsylvania Certified Horticulturist, with a passion for creating beautiful gardens. She is a proud graduate of Columbia University, with a strong academic foundation that is further enriched by completing the esteemed Rutgers University Master Gardener Training Program.

With years of experience in the horticultural industry, Jeannie specializes in professional garden design consultations, providing clients with tailored advice to transform their outdoor spaces.

Whether you're looking to revitalize an existing garden or start a new project from scratch, Jeannie is dedicated to delivering personalized solutions that enhance both the beauty and functionality of your landscape.

-PULL MEASURING TAPES TAUNT + FLAT
-MEASURING IS EASIEST WITH 2 PEOPLE

SOMETIMES IT IS EASIEST TO CLIP
A TAPE MEASURE ON THE CORNER OF
THE HOUSE AND TAKE A "RUNNING"
MEASUREMENT AT EACH WINDOW OR DOOR
SEE BELOW

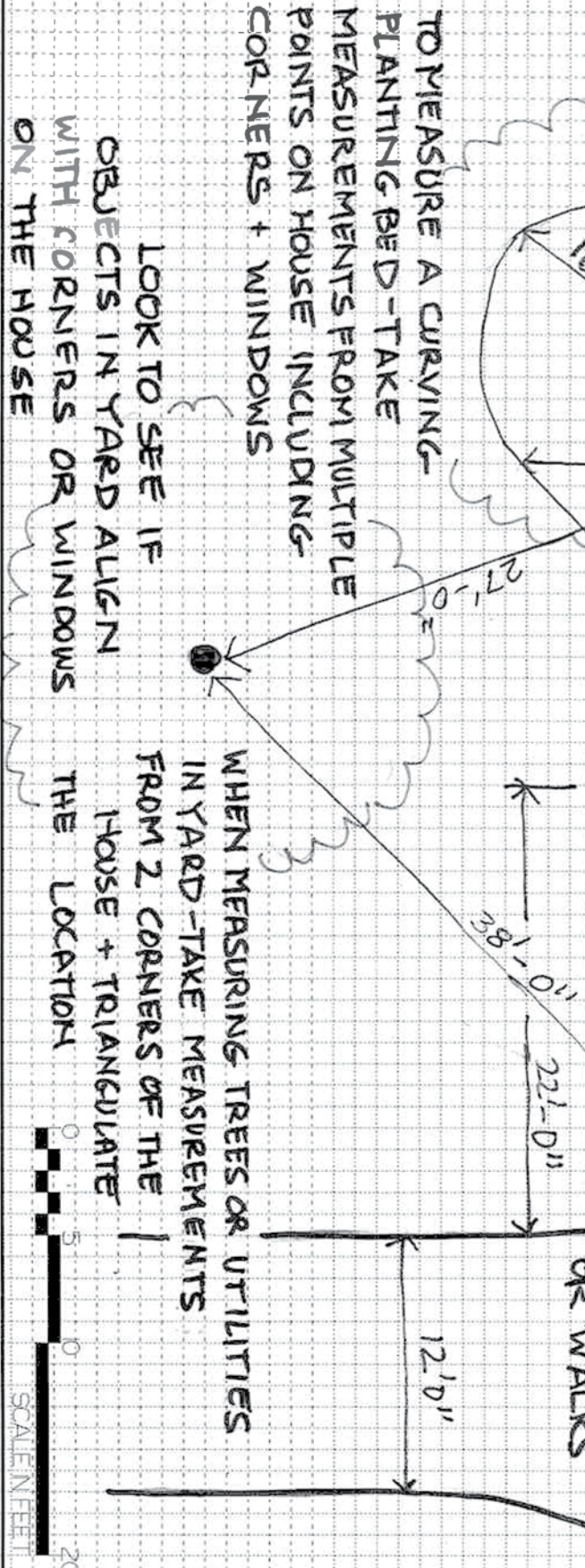
DRAW IN YOUR
NORTH ARROW
USING GOOGLE
MAPS. WHERE
NORTH IS ALWAYS
UP

IT IS GOOD TO
KNOW WHERE LARGE
PLANT MATERIAL
SUCH AS TREES
ARE LOCATED

DON'T FORGET TO
MEASURE ALL SIDES
OF STRUCTURES
OR WALKS

INDICATE STEPS
WITH AN ARROW

SHOW WINDOWS
AND DOORS





316 Tanyard Road Richboro, PA 18954
215-364-2400 | www.gasper.net

Please see our website for current hours

Improve Your Landscape With a Gasper Professional GARDEN DESIGN CONSULTATION



Connect With Us Online



PLDC-2025

Effective June 25, 2025

BEST OUTDOOR
FURNITURE STORE

WINNER 2020, 2023
FINALIST 2021, 2022



Home & Garden
SHOWPLACE™

