

- PULL MEASURING TAPES TAUNT + FLAT
- MEASURING IS EASIEST WITH 2 PEOPLE

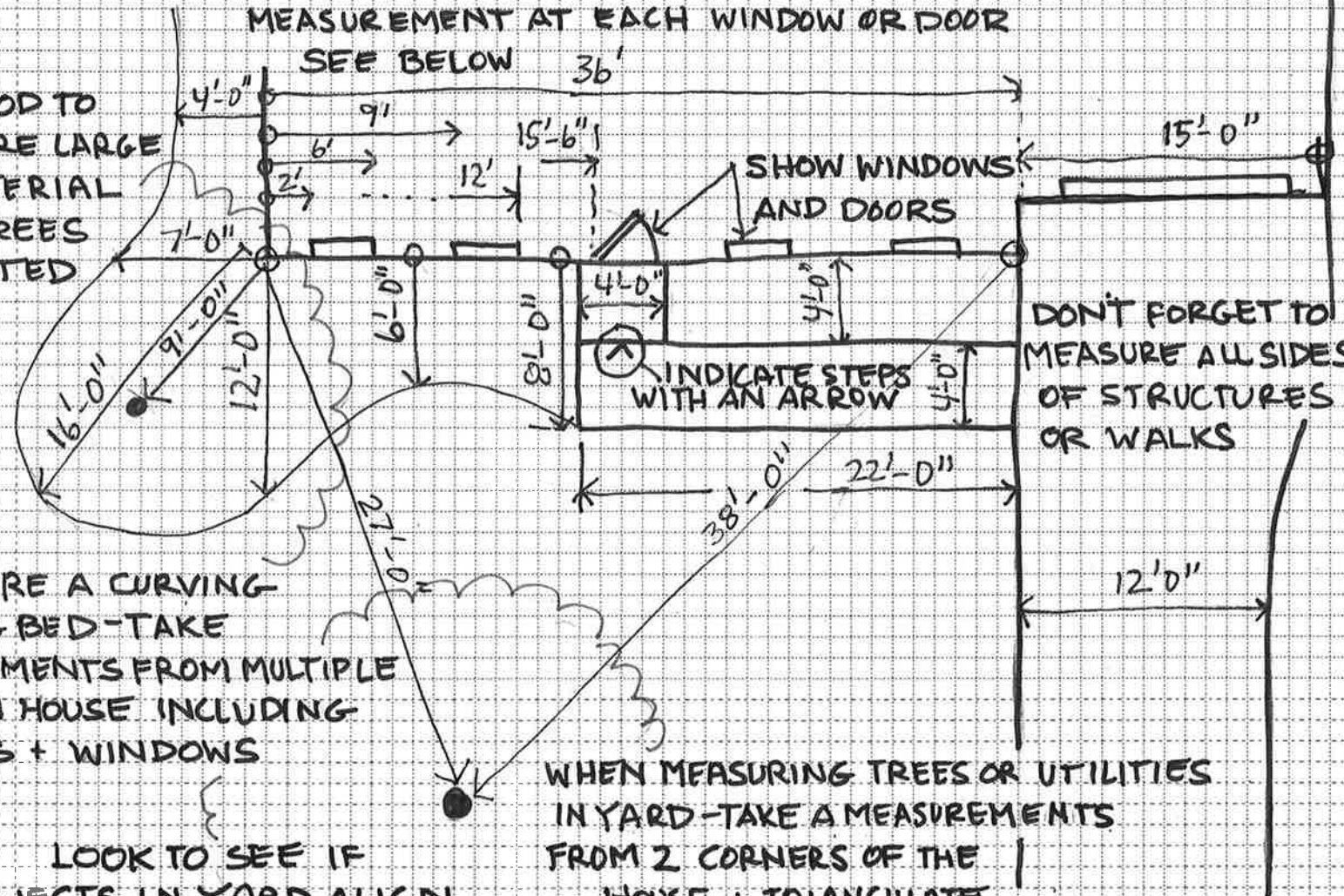
DRAW IN YOUR NORTH ARROW USING GOOGLE MAPS. WHERE NORTH IS ALWAYS UP



SOMETIMES IT IS EASIEST TO CLIP A TAPE MEASURE ON THE CORNER OF THE HOUSE AND TAKE A "RUNNING" MEASUREMENT AT EACH WINDOW OR DOOR

SEE BELOW

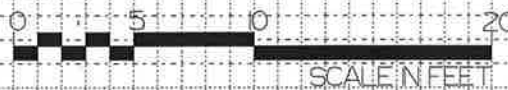
IT IS GOOD TO KNOW WHERE LARGE PLANT MATERIAL SUCH AS TREES ARE LOCATED



TO MEASURE A CURVING PLANTING BED - TAKE MEASUREMENTS FROM MULTIPLE POINTS ON HOUSE INCLUDING CORNERS + WINDOWS

LOOK TO SEE IF OBJECTS IN YARD ALIGN WITH CORNERS OR WINDOWS ON THE HOUSE

WHEN MEASURING TREES OR UTILITIES IN YARD - TAKE A MEASUREMENTS FROM 2 CORNERS OF THE HOUSE + TRIANGULATE THE LOCATION



SCALE: EACH SQUARE EQUALS 1 FOOT

DATE:

PROJECT NAME: DESIGN CONSULTATION

DRAWN BY:

PLEASE GIVE US YOUR ADDRESS

CLIENT NAME:

MEASURING TIPS

Grassier Landscapes

316 TANYARD RD
RICHMOND, PA 15054
(26) 996-2800
WWW.GASPERNET

